

INNOVATIVE SOLUTIONS FOR PROACTIVE RISK MANAGEMENT IN A STORMY WORLD



Complies with international standards:

- IEC 61400-24 (Wind Energy),
- IEC 62793 (Thunderstorm Warning Systems).

Our optimised services for the wind energy life cycle to:



Evaluate your lightning risks & adapt your LPS with our statistics and analysis.



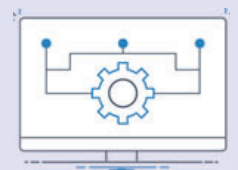
Ensure safety & anticipate the risks in time with our alerts when a storm is approaching and when it goes away.



See if your sites are threatened by storms with live monitoring of lightning and severe weather.



Reduce inspection time & talk to your insurer thanks to a list of your WTG struck by lightning.



Feed your SCADA with real time lightning information from our accurate data and webservice.

ASSESSMENT
REPOWERING

CONSTRUCTION
O&M

OUR EXPERTISE AND RESOURCES AT YOUR SERVICE

Member of  

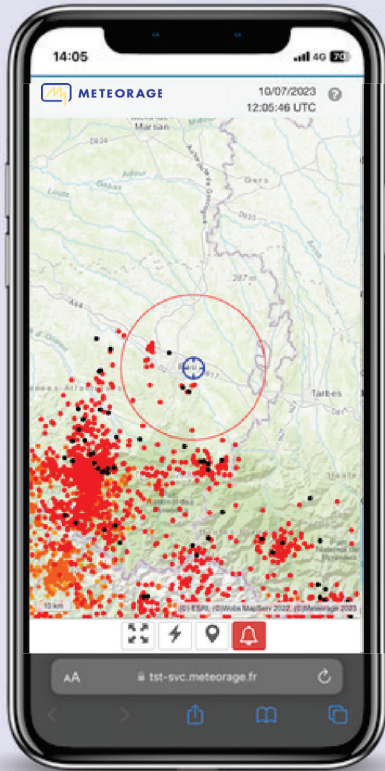
Technical team dedicated to ensure your services are working

24/7

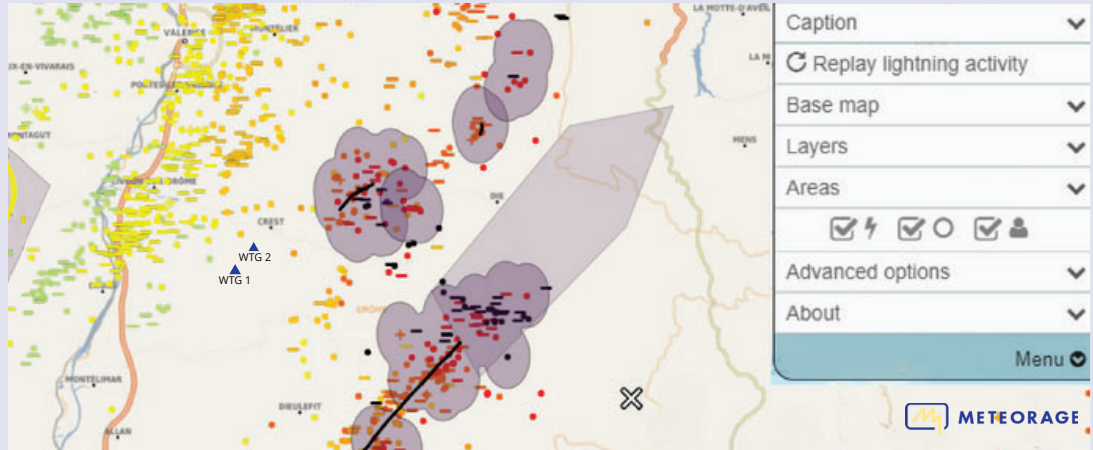
3,500+ customers in 70+ countries

>98% of customer re-subscription and satisfaction

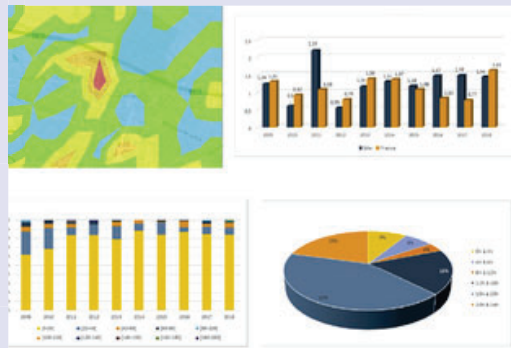
99,9% of availability of our services



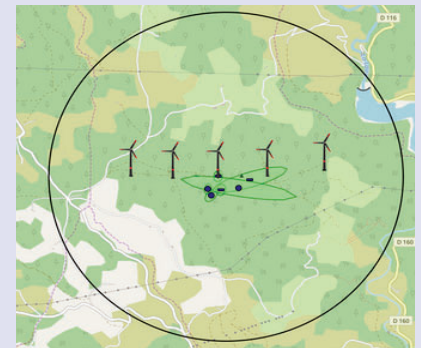
GEOFLASH



OBSERVATION



STATISTICS



LIGHTNING CHECK ADVISOR



"We want to protect our assets by all means, and using METEORAGE's services allows us to detect a potential failure or impact and carry out inspections to make the appropriate repairs."



"The fact of being able to anticipate the storm event is a real advantage in optimizing working activities and in particular for ensuring the safety of our personnel."



"The live monitoring of lightning, the alerts for strikes and high wind & storm forecasting offered by METEORAGE allows us to ensure we are providing the very best in health and safety planning and monitoring."

WHO WE ARE

We have, over the last 30 years, earned a worldwide reputation for the quality and usefulness of our dedicated lightning data services. Our customers use the information we deliver to better protect both people and property against thunderstorms and lightning. We provide numerous sectors (Wind Energy, Utilities, National meteorological services, Insurance, etc.). We detect > 98% of lightning flashes in Europe with a median location accuracy of 100 meters. Outside Europe, we provide the same services using the GLD360 network.

